



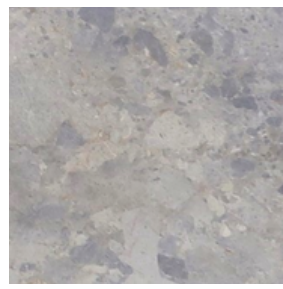
lifestyle pavers
PRODUCT INFORMATION

MARBLE

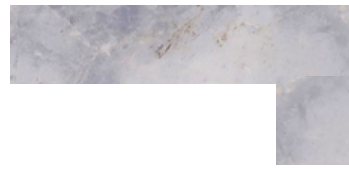
CHEVAL



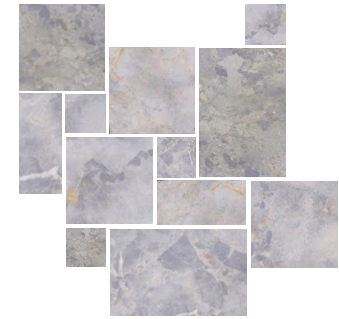
600x400x30
600x400x15



400x400x30



600x400x30/60



French Pattern
30mm

FORMAT	CRATE SIZE	CRATE WEIGHT	PIECES PER CRATE
600x400x30	16.32m ²	1350kg	68
400x400x30	10.88m ²	900kg	68
600x400x30/60	24 lineal	900kg	40
600x400x15	31.68m ²	1350kg	132

FRENCH PATTERN FORMAT

FRENCH PATTERN 30mm	1 x 600x400, 2 x 400x400, 1 x 400x200, 2 x 200x200
---------------------	--

	SET SIZE	SET WEIGHT
FRENCH PATTERN 30mm	0.72m ²	62kg

FRENCH PATTERN IS SOLD BY SET - NOT SQUARE METRE OR PIECE

Sealing your natural stone surface is an easy and effective way to safeguard their beauty. A high-quality sealant enhances stain resistance, simplifies cleaning, and helps preserve the stone's integrity for lasting durability. Lifestyle Pavers proudly recommends and stocks Aqua Mix sealing and cleaning products